

Cycle 2, Week 1 – Rainforest Beetles, ages 4-6


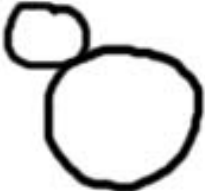








Learning target: Train our eyes to see shapes and lines in objects. Use several types of lines/shapes to create a drawing.

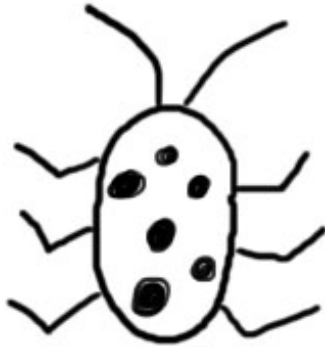
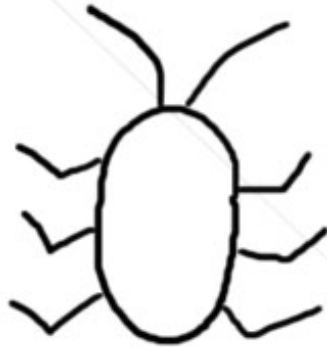
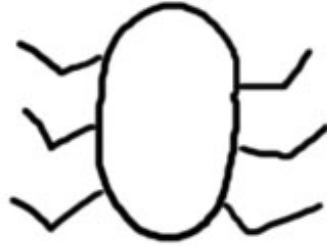
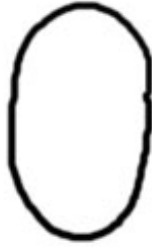
Element of art: line

Materials: cut-out of leaf, 8.5x11 white paper, pencils, colored pencils (or markers)

Draw two rectangles on the whiteboard, the same dimensions as the student's drawing paper. Tape the leaf in the first rectangle. The second rectangle will be where you draw the image.

1. Students fill in OILs worksheet. Talk about the different types of lines they drew (curved, angled, circular, etc.) (8 minutes)
2. Show the students the leaf cut-out on the board and explain that the drawing will be connected to the idea of tropical rainforests, like in the science sentence for the week. Use words to describe the outline of the leaf as you trace it with your finger.
3. Next, begin to draw the first leaf on the board, in the rectangle next to the paper leaf. Go slowly, and allow students to follow along on their paper. Talk about the curvy lines and where your pen is going as you draw. Ask students "What does the line do next?" and draw accordingly.
4. Students follow along as you draw 3 rainforest beetles on the leaf. Each beetle is an oval with angled lines as legs.
5. Show examples of beetles. Ask students what kinds of lines and shapes they see on the beetles. Allow students to design and draw different patterns in each, such as dots, zig zags, and stripes. (Drawing portion: 12 minutes)
6. Students color in the beetles first. Fast finishers can also color in leaves and background. (10 minutes)



Add any designs you wish



Photo by Andreas Kay
Pleasing Fungus Beetle, *Gibbifer* sp., Erotylidae



Photo by Andreas Kay
Eidicella Gralli



Zigzag fungus beetle, *Erotylus incomparabilis*



Sphaerocoris annulus, "Picasso Bug"